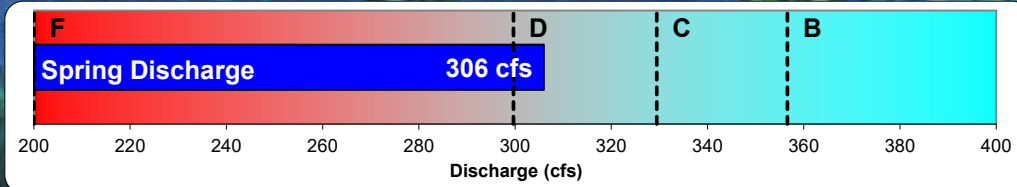


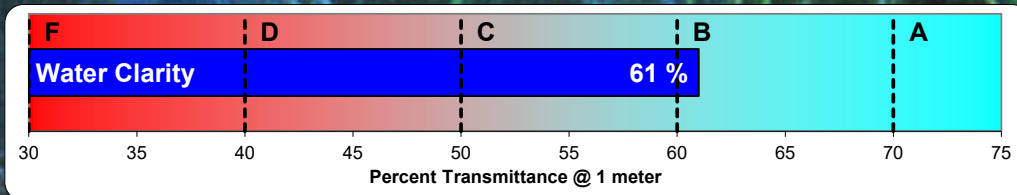
ICHETUCKNEE SPRINGS AND RIVER ENVIRONMENTAL HEALTH - 2016 REPORT CARD

2016 GRADE

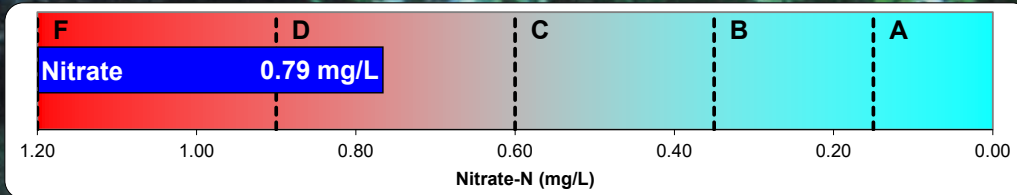
C-



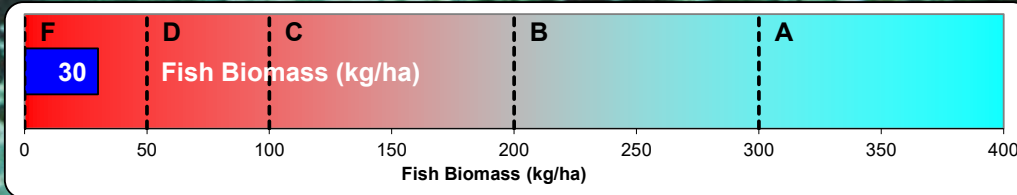
D



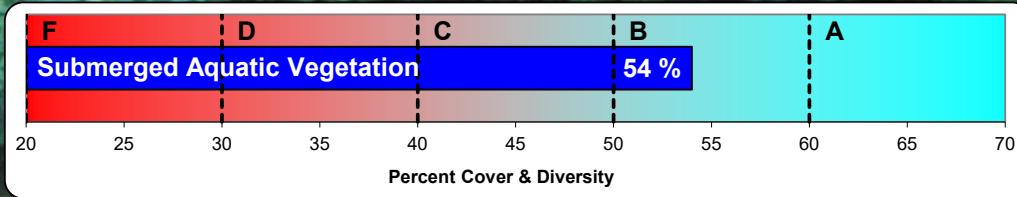
B-



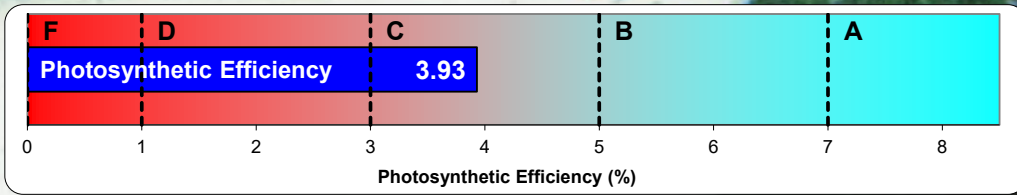
D



F

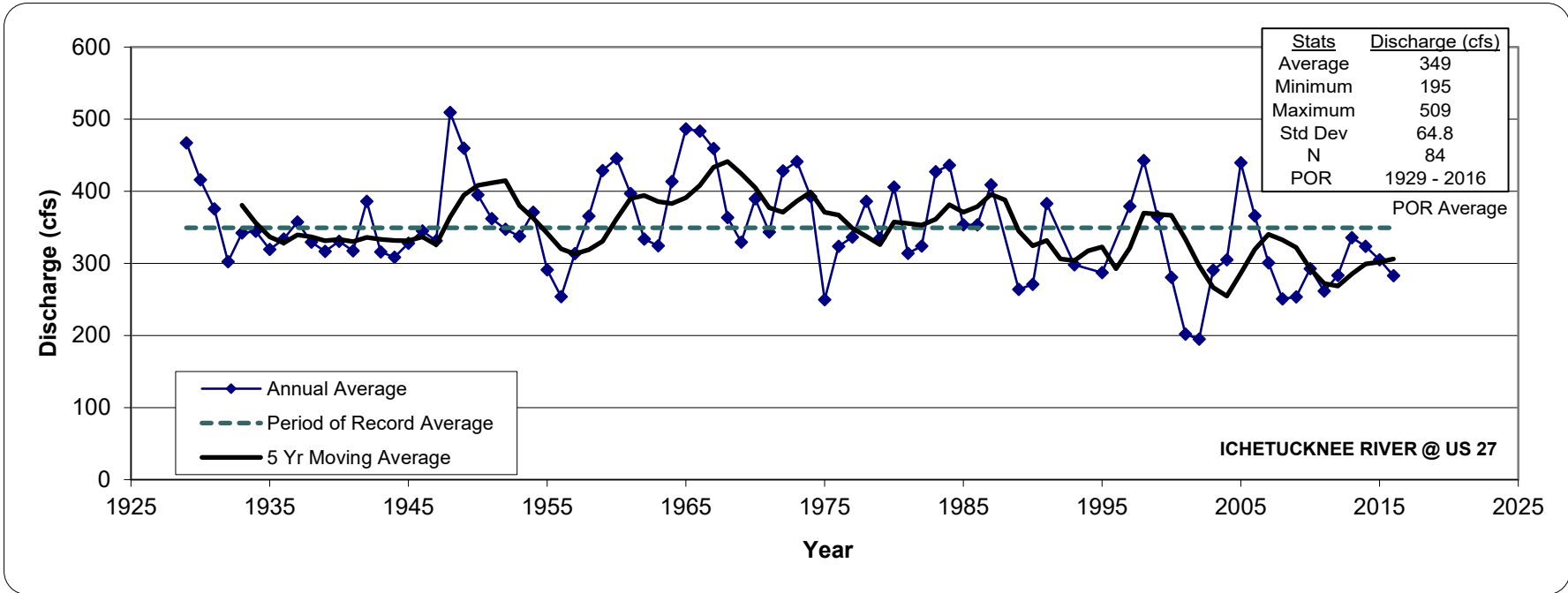


B



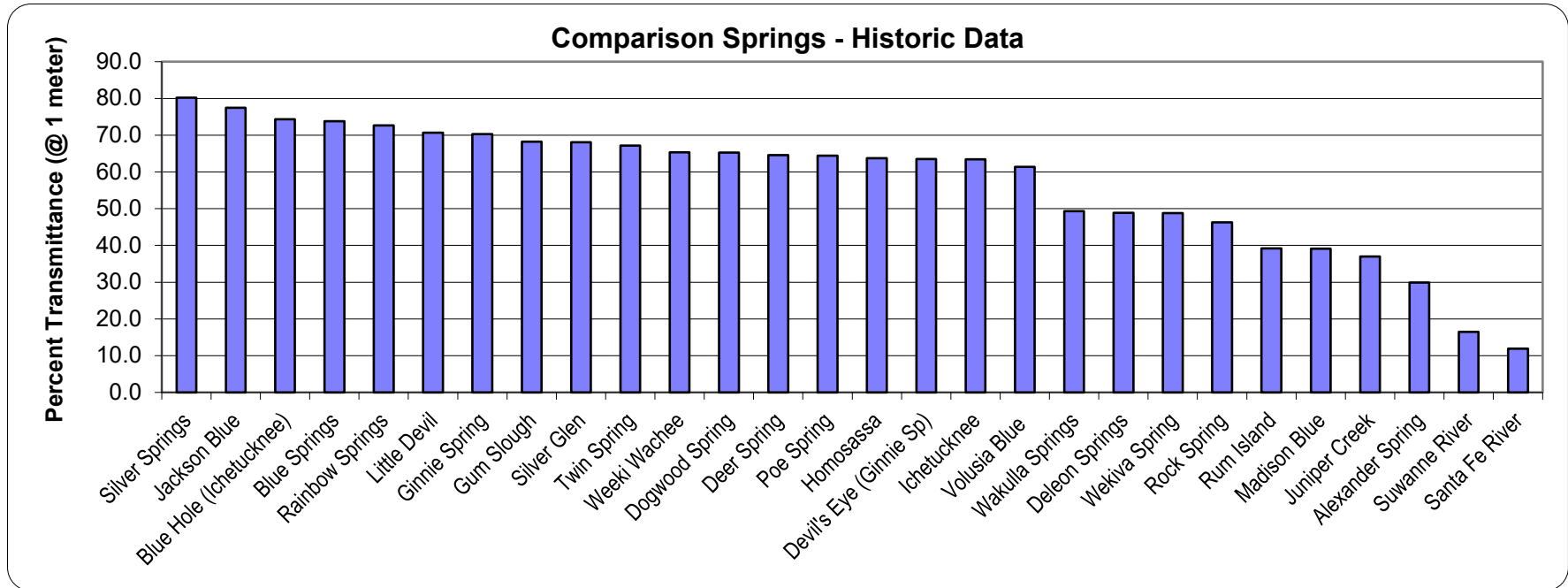
C

ICHETUCKNEE SPRINGS AND RIVER



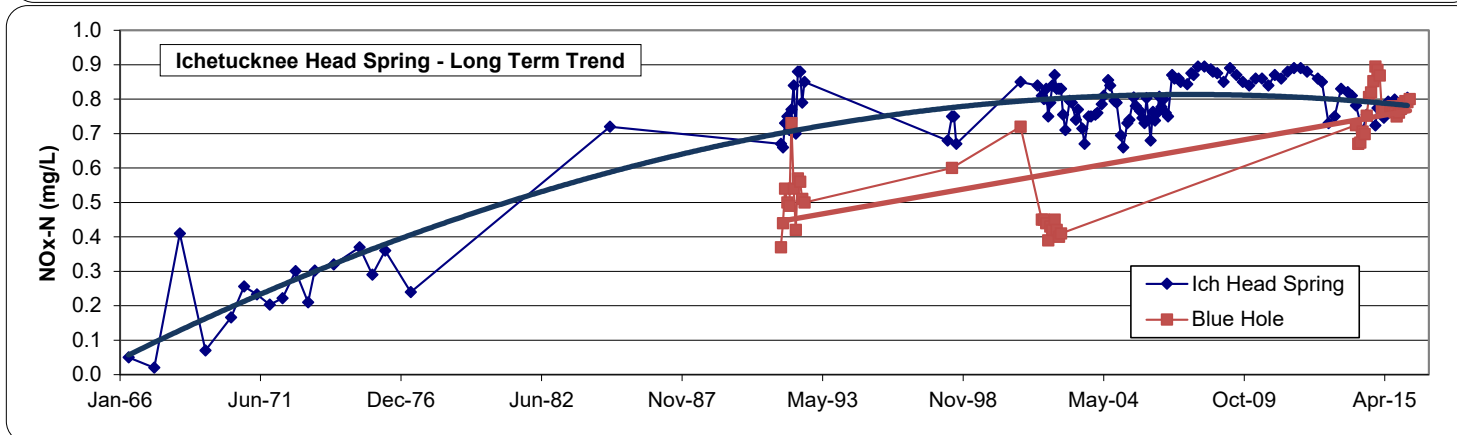
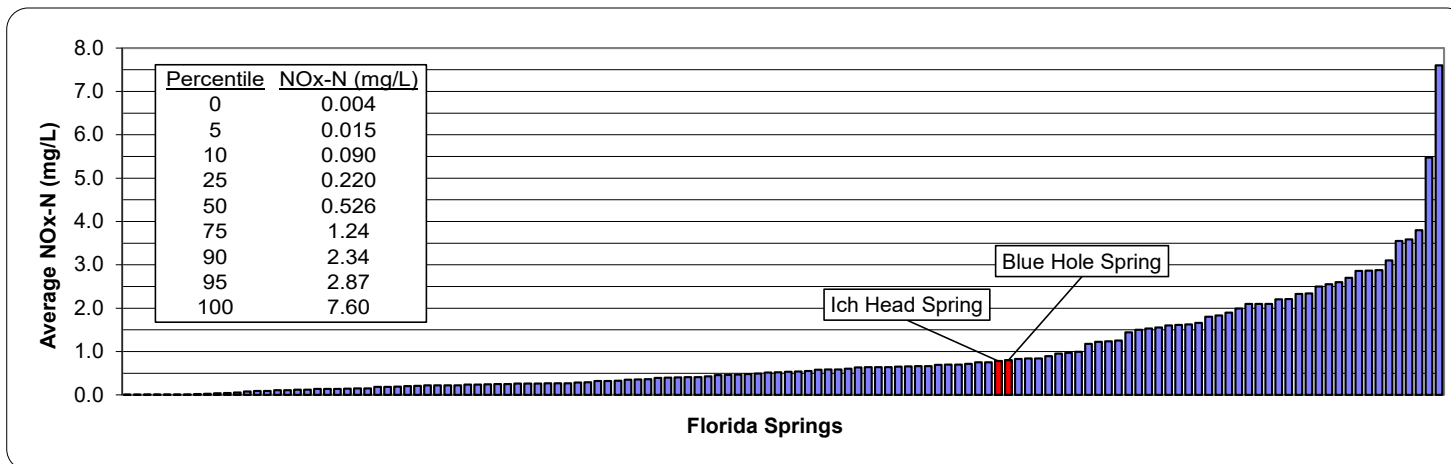
Spring Discharge @ US 27	Grade	Average	A: > 407 cfs B: 357 - 406 cfs C: 329 - 356 cfs D: 300 - 328 cfs F: < 299 cfs
	D	306 cfs	

ICHETUCKNEE SPRINGS AND RIVER



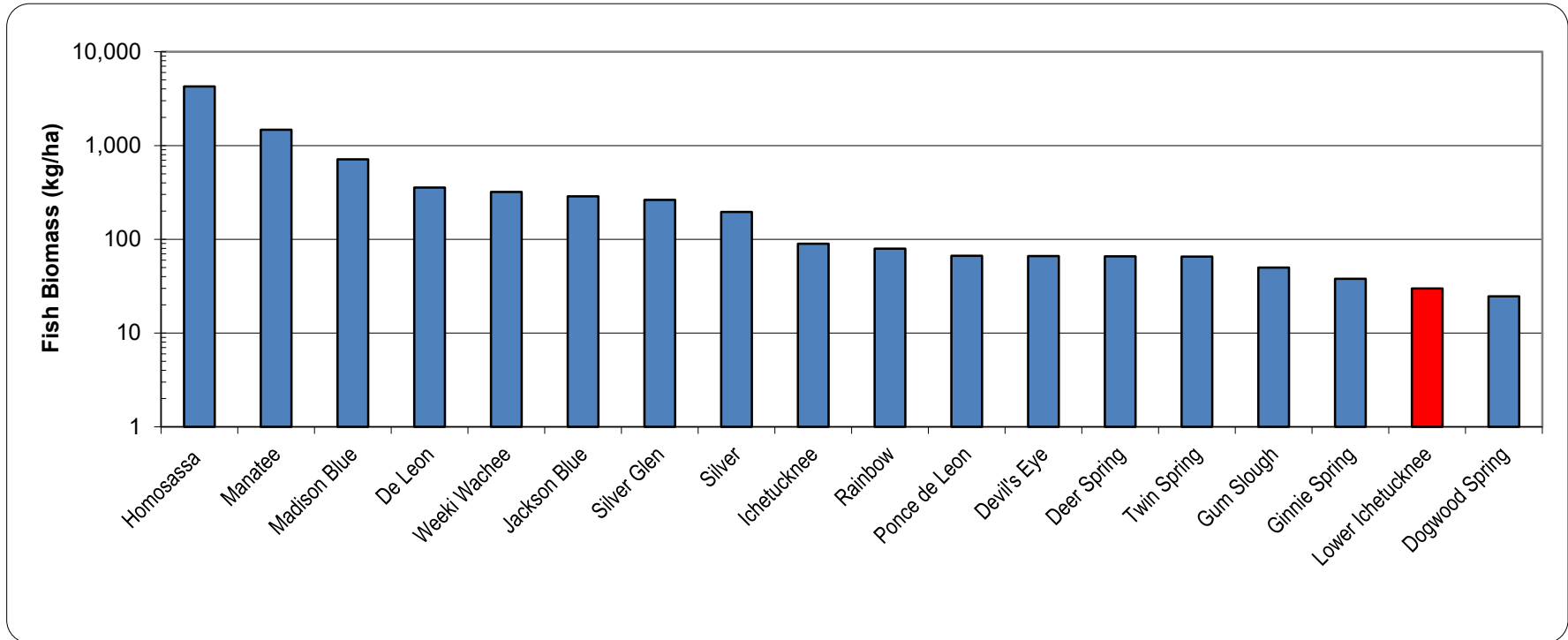
Water Clarity @ Lower Ichetucknee	Grade	Average (2016)	A: > 70 % B: 60 - 69 % C: 50 - 59 % D: 40 - 49 % F: < 40 %
	B-	61% Light Transmittance @ 1 meter depth	

ICHETUCKNEE SPRINGS AND RIVER



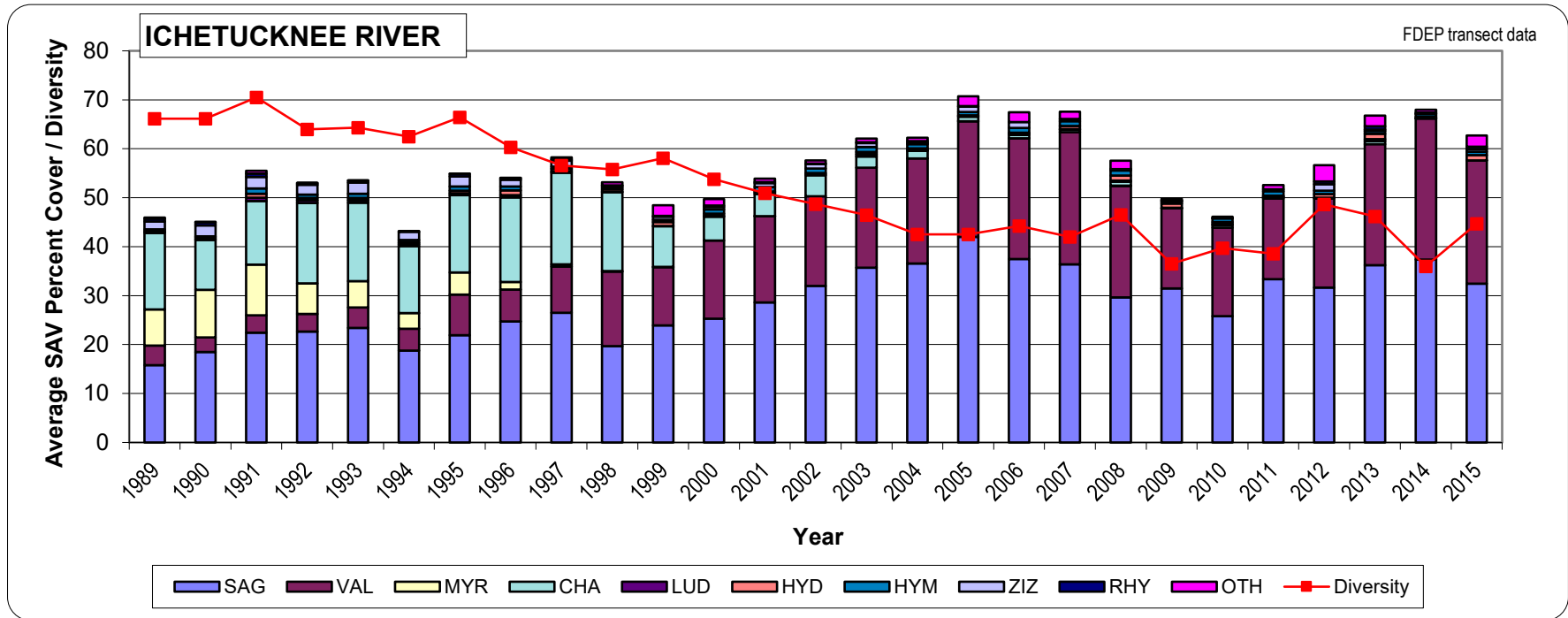
Nitrate Concentration @ Spring Boil	Grade	Average (2016)	A: < 0.15 mg/L
	D	0.79 mg/L	B: 0.15 - 0.35 mg/L
			C: 0.36 - 0.60 mg/L
			D: 0.61 - 0.90 mg/L
			F: > 0.90 mg/L

ICHETUCKNEE SPRINGS AND RIVER



Fish Biomass @ Lower Ichetucknee	Grade	Average (2016)	A: > 300 B: 200 - 299 C: 100 - 199 D: 50 - 99 F: < 50
	F	30 Biomass kg/ha	

ICHETUCKNEE SPRINGS AND RIVER



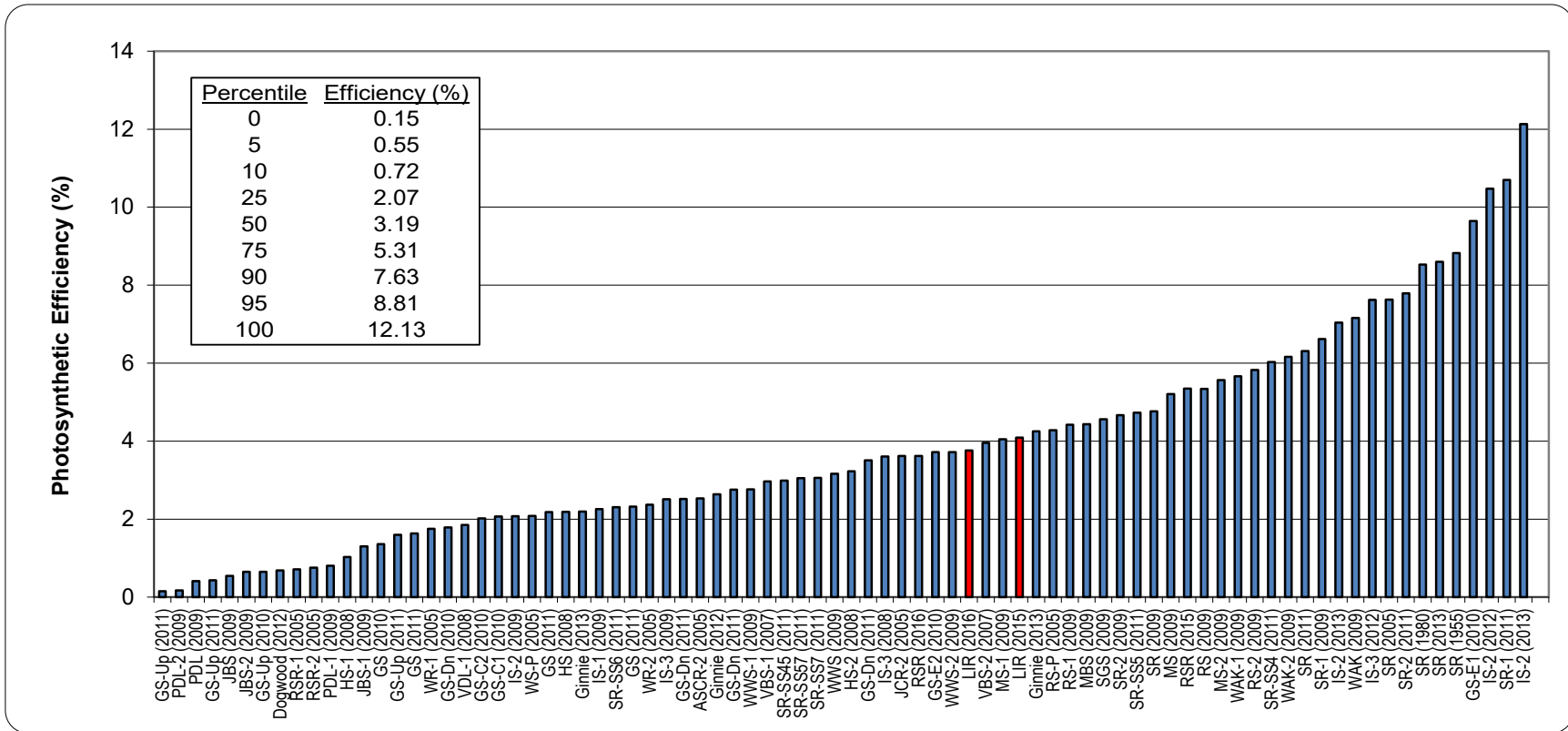
Submerged Aquatic Vegetation *	Grade	Average (2015)	A: > 60 %
	B	53.7 %	B: 50 - 60 %
			C: 40 - 49 %
			D: 30 - 39 %
			F: < 30 %

SAG = Sagittaria kurziana CHA = Chara (prob.) zeylonica HYM = Hymenocallis rotata OTH = Others * 0.5(Percent Cover) + 0.5(Diversity)

VAL = Valisneria americana LUD = Ludwigia repens ZIZ = Zizania aquatica

MYR = Myriophyllum heterophyllum HYD = Hydrocotyle (prob.) verticillata RHY = Rhynchospora sp. or Carex sp.

ICHETUCKNEE SPRINGS AND RIVER



Photosynthetic Efficiency @ Lower Ichetucknee	Grade	Average (2015-2016)	A: > 7.0
	C	3.93 %	B: 5.0 - 6.99 C: 3.0 - 4.99 D: 1.0 - 2.99 F: <1.0